

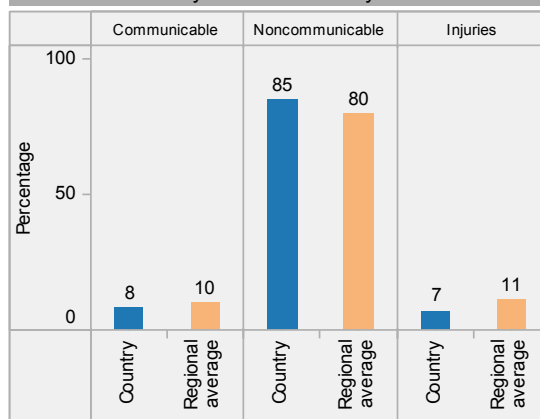
Georgia: health profile

Selected indicators (2012)

		Country	Regional average	Global average	
General	Total population (thousands)	4358	
	Population living in urban areas (%)	53	71	53	
	Gross national income per capita (PPP int. \$)	5770	26352	12018	
	Total fertility rate (per woman)	1.8	1.7	2.5	
	Life expectancy at birth (years) Both sexes	74	76	70	
Life expectancy at age 60 (years) Both sexes	20	22	20		
Healthy life expectancy at birth (years) Both sexes	65	67	62		
Mortality and morbidity	Under-five mortality rate (per 1000 live births) Both sexes	20	12	48	
	Adult mortality rate (probability of dying between 15 and 60 years per 1000 population)	Male	176	179	187
		Female	66	80	124
	Maternal mortality ratio* (per 100 000 live births)	41	17	210	
	Prevalence of HIV (per 100 000 population)	152	244	511	
	Incidence of malaria (per 100 000 population)	0	...	3752	
	Prevalence of tuberculosis (per 100 000 population)	158	56	169	

* Data refers to 2013.

Distribution of years of life lost by causes 2012

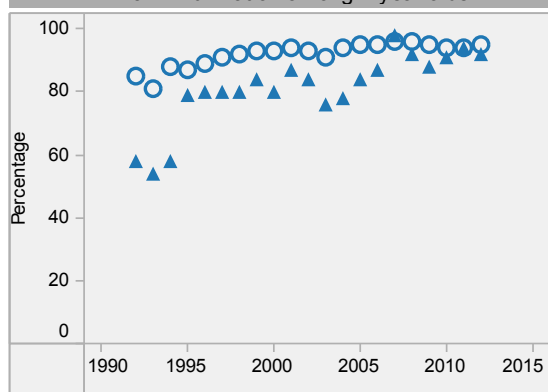


Last update: May 2014.

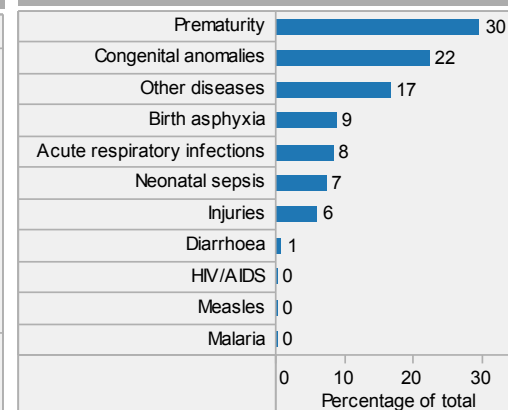
Georgia is located in the WHO Europe Region.

▲ Country
○ Regional average

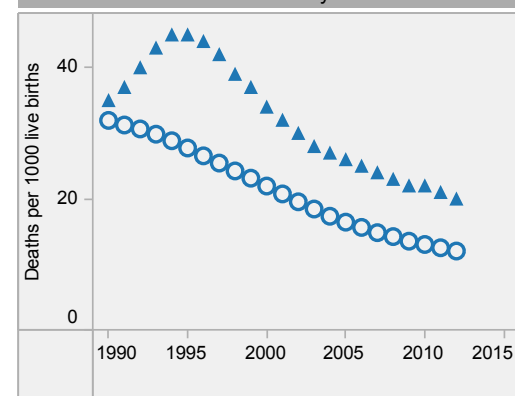
DTP3 immunization among 1-year-olds



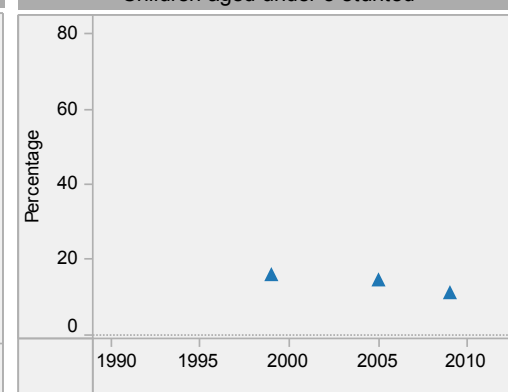
Distribution of causes of deaths in children under-5 2012



Under-5 mortality rate



Children aged under-5 stunted



Georgia: health profile

